

Intrascleral prosthesis

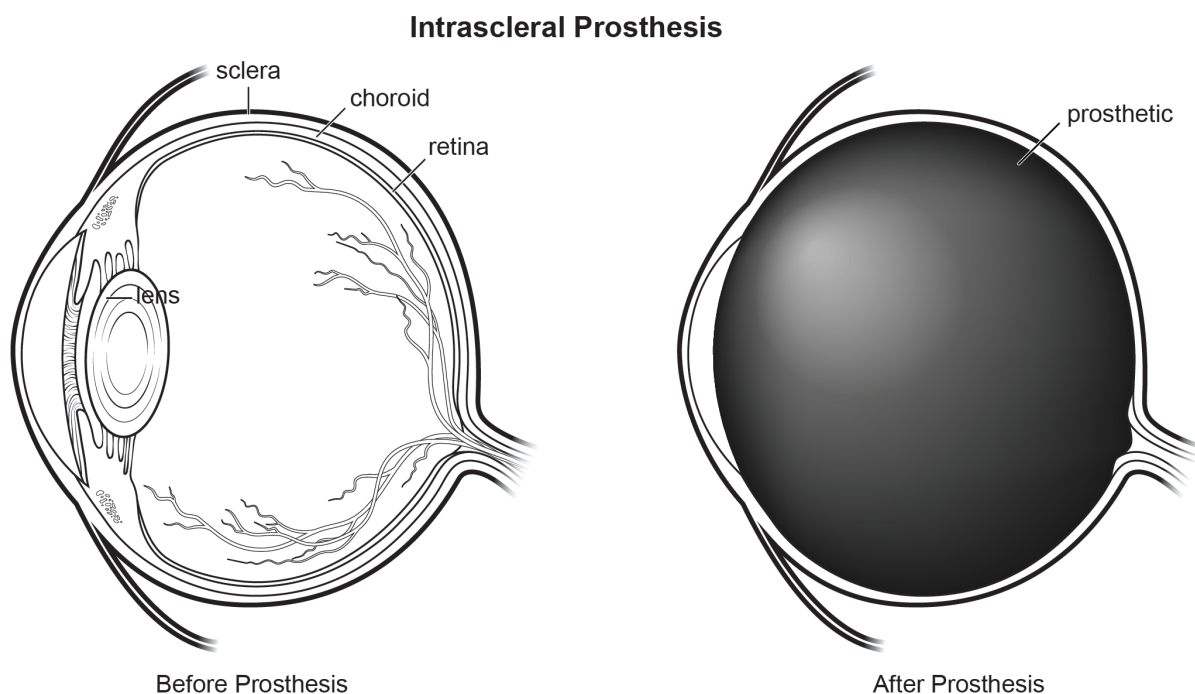
When you are facing a chronic, painful and blinding eye condition an eye surgery is often inevitable. An intrascleral prosthesis is the only version of a “fake eye” that is available for dogs. This is a more cosmetic option than eye removal but it is only an option for certain eye conditions.

An intrascleral prosthesis involves creating an incision over the top of the eye in the white part. The contents of the eye are removed preserving the cornea (the front clear part) and the sclera which is the white part where all the muscles are attached. A silicon ball is placed inside the shell of the eye and the incision is closed.

The immediate post operative appearance of an intrascleral prosthesis can be quite surprising if you don't know what to expect. Removing the contents from the inside of the eye takes away the nutrition from the cornea. In order to replace this nutrition blood vessels grow over the cornea for the first month after surgery. This will look like a red ring around the eye. Once the blood vessels have reached the center of the eye they begin to regress.

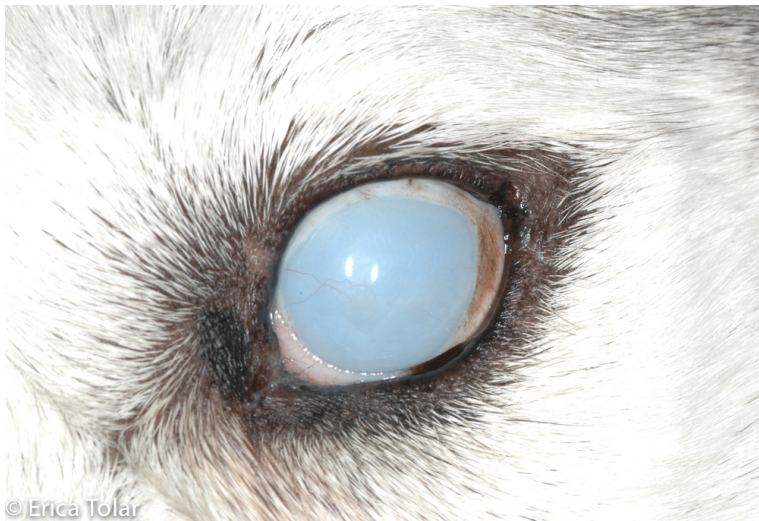
As indicated in the diagram the dog will retain the shell of an eye that will move and look like an eye. In some cases the eye will remain black but it can also turn more of a silver gray. After the procedure your dog will be on topical antibiotics four times daily in addition to oral pain medications and anti-inflammatories. They will also need to wear an e-collar for two weeks.

Not all dogs are candidates for this procedure, contact Dr. Tolar to see if this surgery is an option for your dog.



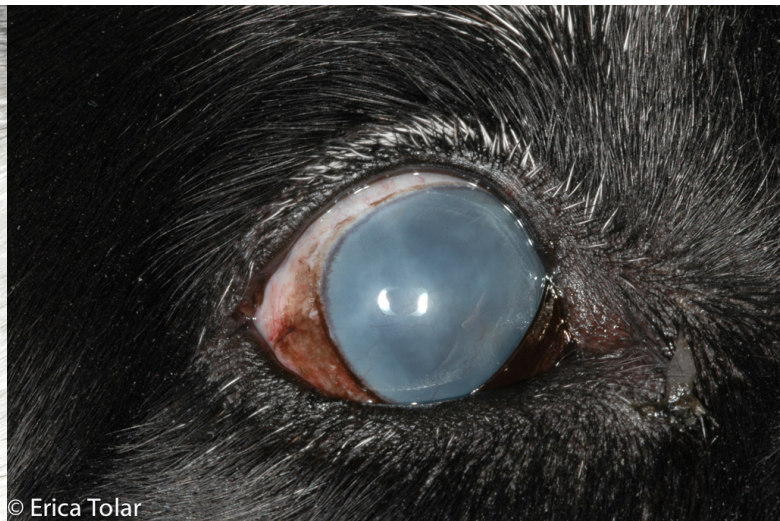


This dog has had an intrascleral prosthesis in both eyes



© Erica Tolar

This dog has had an intrascleral prosthesis in this eye. The implant was blue to mimic his previously blue eye.



© Erica Tolar

This dog has had an intrascleral prosthesis in this eye. The implant was black to mimic his previously brown eye.